

MAY 2022

MERIDIAN RANCH NEWSLETTER

ISSUE NO. 15



Meridian Service Metro District
Recreation Center Mission:

To offer a healthy lifestyle for the residents of Meridian Ranch through facilities and programs for personal fitness, group exercise, organized sports, aquatics, and special community events.

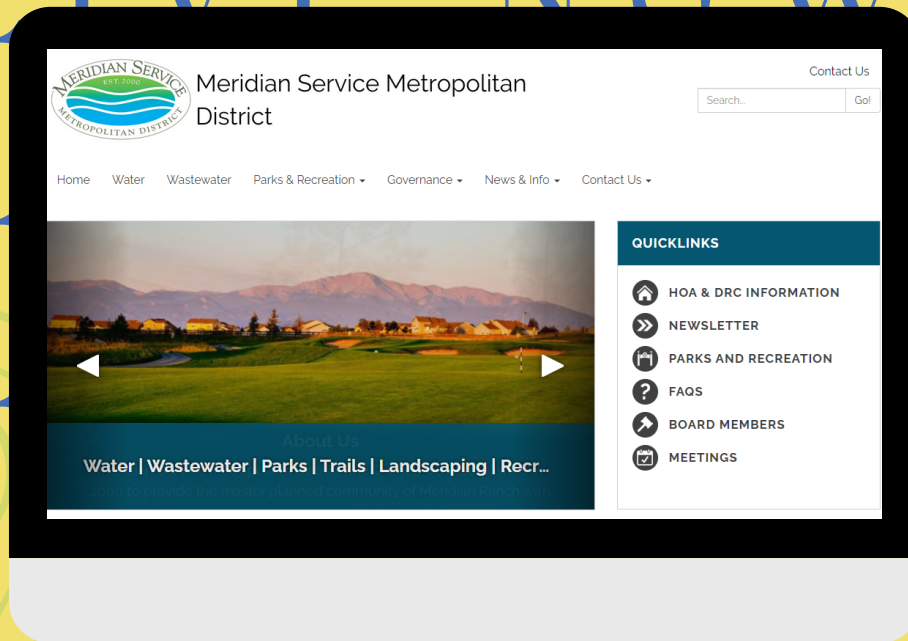
NEW MERIDIAN SERVICE WEBSITE!!

LIVE NOW!

LIVE NOW!

LIVE NOW!

LIVE NOW!



CHECK OUT MERIDIAN SERVICE METRO DISTRICT'S NEW WEBSITE! LATE LAST MONTH, THE DISTRICT LAUNCHED A REDESIGNED WEBSITE WITH SOME NEW AND IMPROVED FEATURES – IT'S BETTER ORGANIZED, MORE ACCESSIBLE FOR OUR NEIGHBORS WITH DISABILITIES, AND IT HAS A SEARCH BAR! THE NEW SITE IS BASED ON A PLATFORM THAT IS EASIER FOR DISTRICT STAFF TO MAINTAIN, AS WELL. THE NEW SITE IS LOCATED AT WWW.MERIDIANSERVICE.ORG, BUT YOU'LL ALSO BE AUTOMATICALLY REDIRECTED FROM THE OLD SITE'S WEB ADDRESS (WWW.MERIDIANRANCHMETRO.ORG). WE'LL BE ADDING MORE CONTENT OVER THE NEXT FEW MONTHS, AND MAKING ADJUSTMENTS TO THE ORGANIZATION AND CONTENT. PLEASE CHECK IT OUT AT WWW.MERIDIANSERVICE.ORG AND USE THE CONTACT US LINK TO LET US KNOW WHAT YOU THINK!

SPORTS



T-BALL

STARTS JUNE 20TH!

AGES:

4-5 T-BALL

6-7 COACH PITCH

8-9 COACH PITCH

MORE INFO COMING SOON!

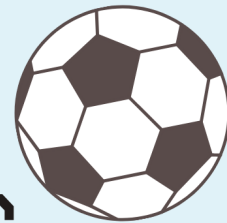
MRRC



DROP-IN



GYM



CLASS



AGES: 7-12

SUPERVISED DROP-IN
OPEN GYM

BASKETBALL, VOLLEYBALL,
SOCCER AND MORE!

TUESDAYS & FRIDAYS 12:30PM-2:00PM

JUNIOR GOLF CLINICS



GRIP
AIM
SETUP
PUTTING
CHIPPING
PITCH
FULL SWING

5-8 years old

9-14 years old

June 13th & 14th

June 20th, 21st & 22nd

July 11th & 12th

July 18th, 19th & 20th

10:00am - 11:00am

10:00am - 11:00am

\$50 per child

\$90 per child

For more information or to sign up, please call the
golf shop at 719-494-1900 ext. 1



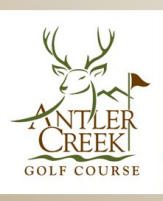
KidsMAKE

Tissue Paper Stained Glass

Take advantage of sunny days by creating a masterpiece that will let color and shapes shine through your window!
For ages 5 - 12.

Fri., May 13 | 4:30 - 5:30 p.m.
Meridian Ranch

tinyurl.com/KidsMake2022



FOR YOUR SAFETY:

Stay off the golf course if you are not golfing!

Tee boxes, fairways and greens are adjacent to these pathways. Quite simply, this is where golf balls fly at 100 mph. The cart paths are not a separate sidewalk for residents, rather they are for golfers only. However, one of the most dangerous things about walking on Antler Creek cart paths is that golfers cannot always see walkers coming.

Golfers pay for the privilege of playing golf on a beautiful course, and should be able to do so without looking out for residents who are walking, dangerously, on golf course property.

Connecting all of the great parks and open spaces in Meridian Ranch is over 20 miles of trails, ready for your hiking, biking and dog-walking pleasure. So please be safe and stay on the trails.

Follow us on:



@AntlerCreekGolf



AntlerCreekGolfCourse

www.AntlerCreekGolf.com

9650 Antler Creek Dr.
Falcon, CO 80831

(719) 494-1900 ext. 1



For a detailed view visit <https://bit.ly/MRTrails> or scan QR code

A Golf Digest article once noted that thousands of people are seriously injured each year by tee shots, and those injuries include concussions, hematomas, loss of sight and broken bones. While it would be a tragedy for a human to be injured, there are also many unsuspecting dogs at risk, whose masters walk them on the cart paths.



SCAN ME

www.MeridianRanch.com | info@MeridianRanch.com | Facebook @MeridianRanchCO



**Cinco De Mayo
Street tacos
2 for 1 Margaritas**



*Madera's
Grill
and
Cantina*

**Cinco de Mayo
Thursday, May 5th
11:00am—9:00pm**

*Street Tacos
Homemade Mexican Salsa
2 for 1 House Margaritas
Mexican Beer Specials*

719-494-1900 ext. 2
www.MaderasGrillAndCantina

Save the Date!

**Meridian Ranch Military
Appreciation
Golf Tournament**

9/11/2022

Saluting those who serve!



Open and FREE to Meridian Ranch residents who are active duty or retired military & their spouses.

FLICK N' FLOAT



**MAY 21ST
6-8PM**

PARENT'S NIGHT OUT

Meridian Ranch Recreation Center

Friday, May 20th

Ages 5-10

5:30 P-10:00 P

**RESIDENTS: \$20
ADDITIONAL CHILD(REN) \$15**

**NON-RESIDENTS \$25
ADDITIONAL CHILD(REN) \$20**



*There is some paperwork needed.
Please sign-up at the Front desk!*

FOR MORE INFORMATION CONTACT:

CHILDCARE COORDINATOR
CHILDCARE@MERIDIANSERVICE.ORG (719) 495-7119

APRIL SHOWERS
BRINGS MAY FLOWERS

WHAT DOES MAY FLOWERS BRING?

2ND ANNUAL
CRAFTING FOR A CURE

SATURDAY, MAY 21ST

AT MERIDIAN RANCH RECREATION CENTER

10AM-2PM

FREE ADMISSION

FOOD – ENTERTAINMENT – CRAFTS AND MORE

VENDOR SPACE AVAILABLE

\$50 TO THE LUPUS FOUNDATION OF AMERICA

CONTACT CHRISTINE AT INFO@SOCOLUPUS.ORG



ALL PROCEEDS BENEFIT: LUPUS FOUNDATION OF AMERICA

May is National

Lupus Awareness Month

Celebrate Mom at **THE Shops**
AT MERIDIAN RANCH



Omelets Etc
Family Owned



Get Your Utility Bill Electronically!

Sign up to receive your monthly utility bill via email

Help your District save money and receive your bill on time every month!

Use the form on the District's website, meridianservice.org, under the "Contact Us" tab, to request your utility bill via email. You'll save the District printing costs and postage, and ensure you receive your bill timely wherever you are.

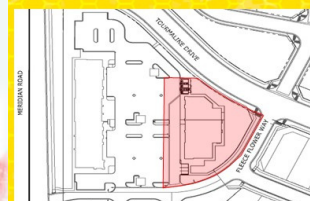


Our excitement is **BUILDING** for your future enjoyment!

The excitement is building for Phase III of The Shops at Meridian Ranch. This new phase will provide additional space for more services to Meridian Ranch residents and surrounding neighborhoods. We look forward to adding more great businesses to our already great lineup!

Please be cautious as you enter the area illustrated. You may experience detours and changes in traffic flow due to safety protocol. During construction you can expect a portion of the parking lot will still be available, however, access may vary from day to day. Completion is expected to be in late 2022.

We apologize in advance for any inconveniences.



UNDER CONSTRUCTION



STONEBRIDGE



Continue to mark your calendars!

The Third Tuesday of each month are the HOA Board meetings starting at 7:30 a.m. unless otherwise posted.

The Third Thursday of each month is Bingo night starting at 5:00 p.m. – Thank you! Thomas Hoang

The Fourth Friday of each month is Food Truck Friday starting at 5:00 p.m.

June – the community cleanup will be from June 20th through the 22nd!

Goodwill will be parked on June 20th at the Stonebridge parking lot with semi's to take whatever you could not sell at the community wide garage sale. Please note, they do not take furniture anymore!

Let's Keep It Clean!

It's difficult to follow rules that you are unaware of, and while everyone gets a copy of The Declarations of Covenants, Conditions and Restrictions, not everyone is "in the know" regarding trash totes.

Everyone can agree that trash is not pleasant to look at, so it is important to minimize the visual impact it has on the community by following a few simple rules.

What are the rules about trash anyway?

3.10 Restrictions on Garbage and Trash.

No refuse, garbage, trash, lumber, grass, shrub, tree clippings, plant waste, compost, metal, bulk materials, scrap or debris of any kind shall be kept, stored, or allowed to accumulate on any Lot except within an enclosed structure or appropriately screened from view, except that any container containing such materials may be placed outside at such times as may be necessary to permit garbage or trash pick-up. Burning of trash is prohibited.

So in short:

1. You can put your trash out the night before pick-up (Only until the evening of pick-up).
2. Rocky Mountain Disposal allows 2 extra bags of trash per collection.
3. Your totes need to be screened from view all other times in your garage or within a trash screening structure – just pulled up the driveway or beside your home, your trash would not be appropriately screened.

Estelle is onsite Tuesdays, Thursdays and Fridays from 10-5- pick up key cards, make a reservation for The Lodge, or have any Lodge questions.

Estelle - estelle@warrenmgmt.com – p: 719-694-9563

Questions? We are here to help you!

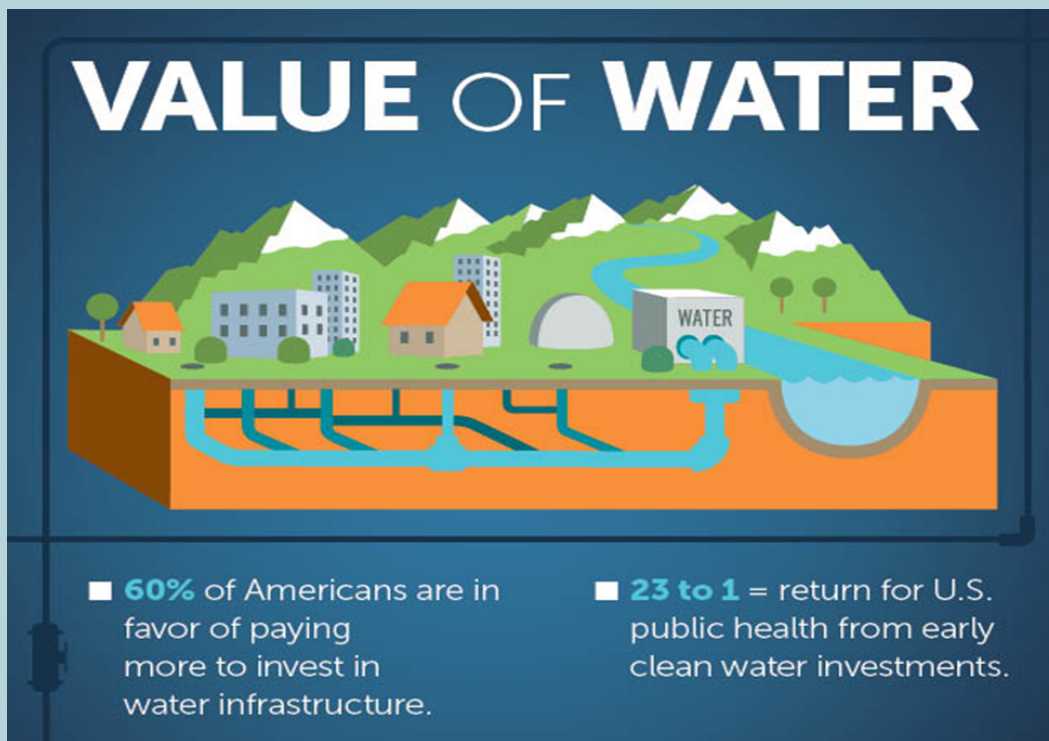
Jamie or Josh at Warren Management Group; Email: stonebridge@warrenmgmt.com

p: 719-685-8743



Manager's **MESSAGE**

May 1-7, 2022, is National Drinking Water Week. Water is essential to life. You can't start your day in the morning without using our safe, reliable, public water supply and sanitary sewer system. In honor of National Drinking Water Week, we invite you to consider the significance of our water sources and delivery system. In the early 1900s, the average life span in the United States was in the mid-40s. Now, it is in the 70s. Safe drinking water, and sanitary sewer systems are a significant contributor to this change in longevity. We now take for granted that waterborne diseases like typhoid and cholera are no longer an everyday concern.



The Meridian Ranch community gets its water from wells (groundwater). There are 16 on-site and 6 off-site wells serving the community. These wells are as deep as 2,600 feet and as shallow as 150 feet. About 200,000 feet of water pipes, several booster pumps, and over 6,000,000 gallons of storage are used to deliver water to our customers.

The quality of our water is tested regularly to assure compliance with the federal Safe Drinking Water Act. The District posts on our website (www.meridianservice.org) our annual Consumer Confidence Reports with detailed information about water quality testing and how our water compares to government standards. We consistently meet all water quality standards.

Jim Nikkel, General Manager

Meridian Ranch

DRC 1 & 2

Tree Stakes

Trees require tree stakes as extra support for the tree as it stabilizes its root system by establishing new roots and can help the new tree from being uprooted in strong winds. According to the International Society of Arboriculture, trees establish more quickly and develop a stronger trunk and root system if they are not staked at the time of planting (<http://www.treesaregood.org/treeowner/plantingtree>), however, living in the Falcon area means we experience frequent winds and it is normally recommended to stake trees for 1-2 growing seasons to keep them from uprooting.

The stakes need to be removed as soon as the root system is established because the tree will not develop the strength needed to face nature's forces when it is staked. The simplest way to see if a tree requires staking for stability is by grasping the trunk of the tree and gently moving it while watching for movement of the root ball. If the root ball is firmly in the ground, stakes can and should be removed.

Trees that have been staked too long tend to either topple over or simply snap in half in strong winds, rather than swaying as trees are supposed to. Trunk damage can also occur as the tree attempts to grow around the supports that get tighter as the tree increases its girth. Trees which have been staked too long will develop less trunk taper and have weaker tissue and therefore be more prone to breaking and bending (<https://www.finegardening.com/article/to-stake-or-not-to-stake>; <https://edmondok.com/1439/Stake-Trees-Properly-to-Prevent-Damage>)

Tree Health

Suckers on the bottom of a tree is the tree's last effort trying to survive as they indicate root damage, and this compromises the primary canopy. When suckers have grown it is more effective to remove and replace it to keep your minimum requirements.

When you buy a high-quality tree, plant it correctly, and treat it properly, you and your tree will benefit greatly for many years. When you buy a low-quality tree, you and your tree will have many costly problems even if you take great care in planting and maintenance. Consider the following when selecting a tree at the nursery.

- Tree should appear healthy. No discolored bark, wilted leaves, etc.
- Branches should be spaced evenly around the trunk.
- Tree trunk should taper from a solid base, gradually becoming more slender towards the top.
- Tree foliage and branches should be distributed on upper 2/3 of tree.
- Tree should contain a central, dominant leader.
- Tree should be free from mechanical damage.
- Tree should be free from insects and diseases.
- Roots should not be girdling, circling, or pot bound.

If you have not brought your property into compliance with planting trees, NOW is a good time to plant.

Plant the top of the root ball slightly above ground level. The root collar (flare) must be visible one inch above final grade. Set root ball on SOLID ground and not on loose backfill in the hole; this will eliminate settling. Remove at the least top ½ of all wire and baskets from balled and burlapped trees and completely remove containers from containerized stock. Adding peat moss or manure to soil in planting hole is not necessary (too much can cause a potted tree effect and restrict root growth). Backfill hole with original soil. Do not fertilize at planting time.

Mark your calendars!

May starts the Yard of the Month! If you have seen a yard which should be nominated for yard of the month, please contact Jamie Adams, Managing Agent for Meridian Ranch at jamie@warrenmgmt.com.

June is the annual community clean up days! June 20th through the 22nd at the Shops at Meridian Ranch vacant land.

Governing Documents can be found on the websites:

<http://portal.warrenmgmt.com/?c=16> (DRC no 1)

<http://portal.warrenmgmt.com/?c=99> (DRC no 2)

Questions? Please contact your Meridian Ranch DRC Management Team:

Jamie Adams, CMCA, AMS, PCAM - Managing Agent - jamie@warrenmgmt.com

Julie Sampson, Governance Director - DRC1governance@meridianranchdrc.org

Hannah Shea, Governance Administrator-DRC2governance@meridianranchdrc.org

Chaylyn Petrik, DRC Director- DRC@meridianranchdrc.org



MERIDIAN RANCH

DESIGN REVIEW COUNCIL NO. 1



EST. 1992
WARREN

MANAGEMENT GROUP AAMC
Accredited Association Management Company



MERIDIAN RANCH

DESIGN REVIEW COUNCIL NO. 2

Madera's Grill and Cantina

Open Mother's Day!
Sunday, May 8th
 7:00am—2:00pm

Carnations presented to Moms while they last.
 Check out our Mom's Mimosa Special!

719-494-1900 ext. 2 www.MaderasGrillAndCantina

Personal Training

SCAN FOR MORE INFORMATION OR CONNECT!

PERSONAL TRAINER & WELLNESS COACH

PERSONAL TRAINER & WELLNESS COACH

Kiley Draper, BSc, CPT, PN1
 Email: Kiley@strengthtoflourish.com
 Phone: (719)-454-2451

Happy Mother's Day

A Mother is Like a Flower
 Each One
 Beautiful & Unique

<p>Move</p>	<p>Nourish</p>	<p>Flourish</p>
<p>Custom strength training, cardio, and mobility programming based on needs, goals, health history, training experience and schedule.</p>	<p>Sustainable, practice based approach to building healthy nutrition, sleep, and stress management habits in to your life- one day at a time.</p>	<p>Gain the tools, knowledge and confidence needed to and continue flourishing in your health & fitness journey long-term.</p>

Strength FLOURISH

SIGN UP NOW AT
WWW.STRENGTHTOFLOURISH.COM

Still need to set up your Meridian Ranch Recreation Center online portal?

Stop by the Meridian Ranch Recreation Center front desk to make sure your account is up to date and your email is on file.

THEN, go to meridianranch.clubautomation.com

Scroll down to the section labeled "First time here?" and click on the "Access My Account" icon.

This will then prompt you to fill out your first name, last name, and email. Once this is done and Club Automation was able to locate you in the system, an email will be sent to you to prompt you to complete your online portal set up.

Questions or issues? Call 719-495-7119 or stop by MRRC front desk.

Meridian Ranch Community Directory

MSMD Board of Directors:

President:

Butch Gabrielski

Meridian Ranch Recreation Center

Phone: 719-495-7119

mrrc@meridianservice.org

Secretary/Treasurer:

Wayne Reorda

MSMD Office:

Phone 719-495-6567

Assistant Secretary/Treasurer

Bill Gessner

Mike Fenton

Tom Sauer

www.meridianservice.org

www.meridianranch.com

www.stonebridgecoloradosprings.com

Meridian Ranch DRC Management Team:

Jamie Adams, CMCA, AMS, PCAM – Managing Agent – Jamie@warrenmgmt.com

Julie Sampson, Governance Director – meridianranch@warrenmgmt.com

Chaylyn Petrik, DRC Administrator- meridianranch2@warrenmgmt.com

Governing Documents can be found on the website:

DRC No. 1 & DRC No. 2 - portal.warrenmgmt.com/ ; **Resources;**
Governing Documents

Follow us on



Hours of Operation

Meridian Ranch Recreation Center

Mon-Fri 5:30 AM - 8:30 PM

Saturday: 8 AM - 6 PM

Sunday: 9 AM - 5 PM

MSMD Office

Mon-Fri 8 AM - 4:30 PM